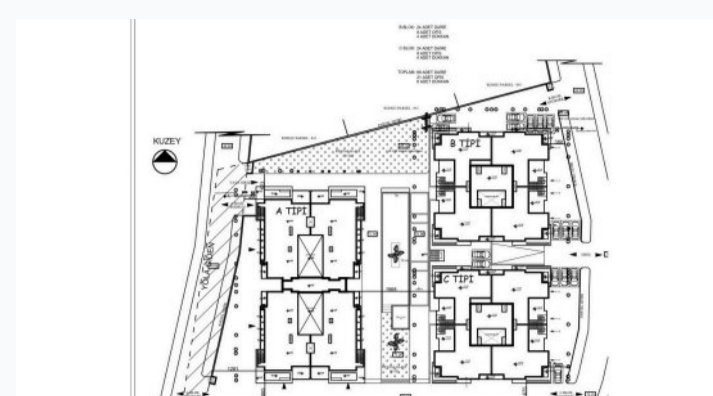
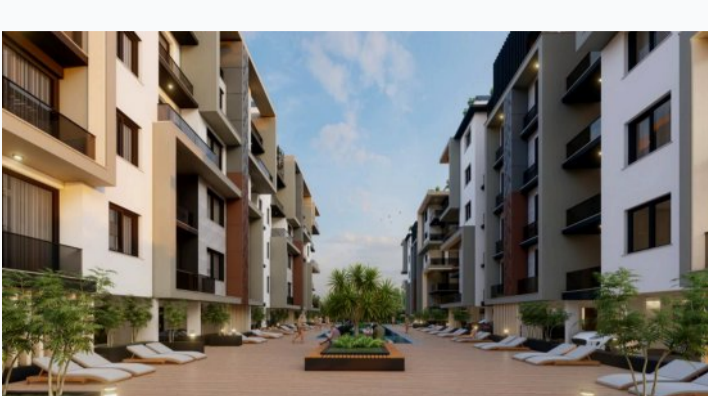
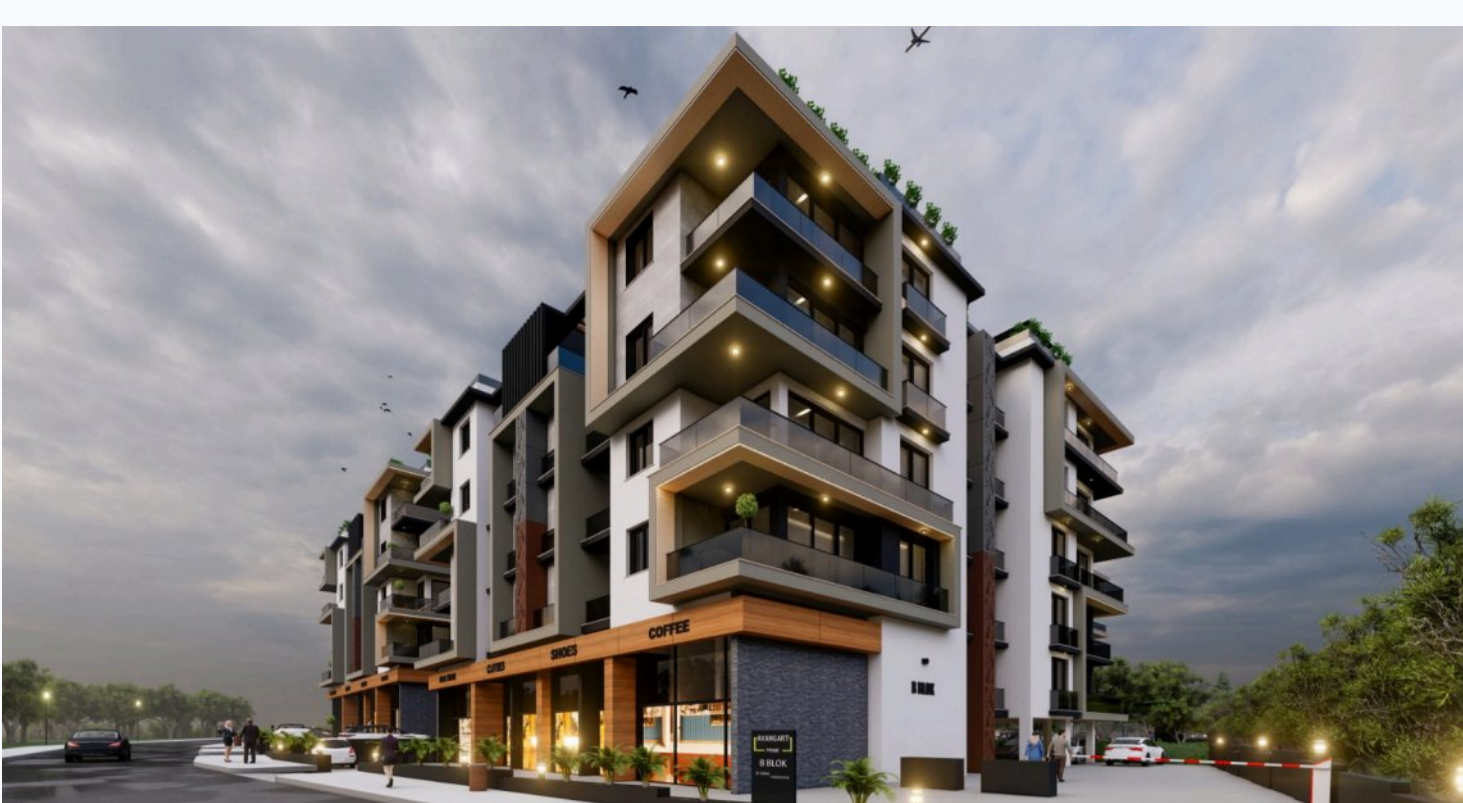


Avangart Prime residential complex

Location **Kyrenia, Girne Merkez**



About the project



Developer	Ardem
Start of sale	01.05.2023
Key handover	2025
Houses/blocks	3
Building floor	5 Min 5 Max
Units total	43 - 1+1, 48 - 2+1, 8 - 3+1

Distance to the sea - 1100 m

Distance to key locations:

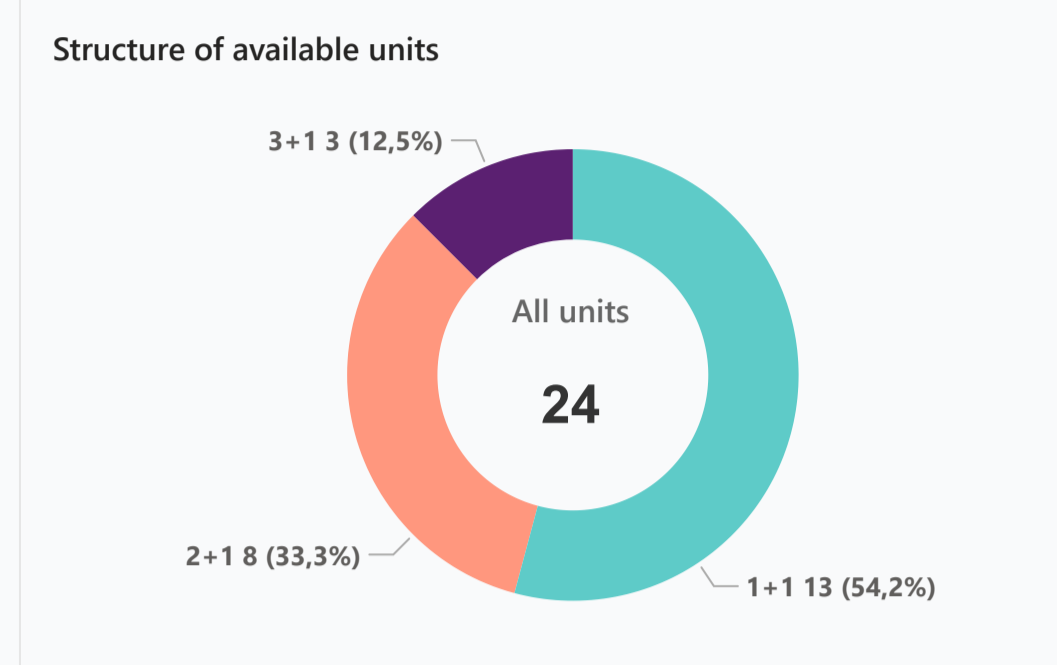
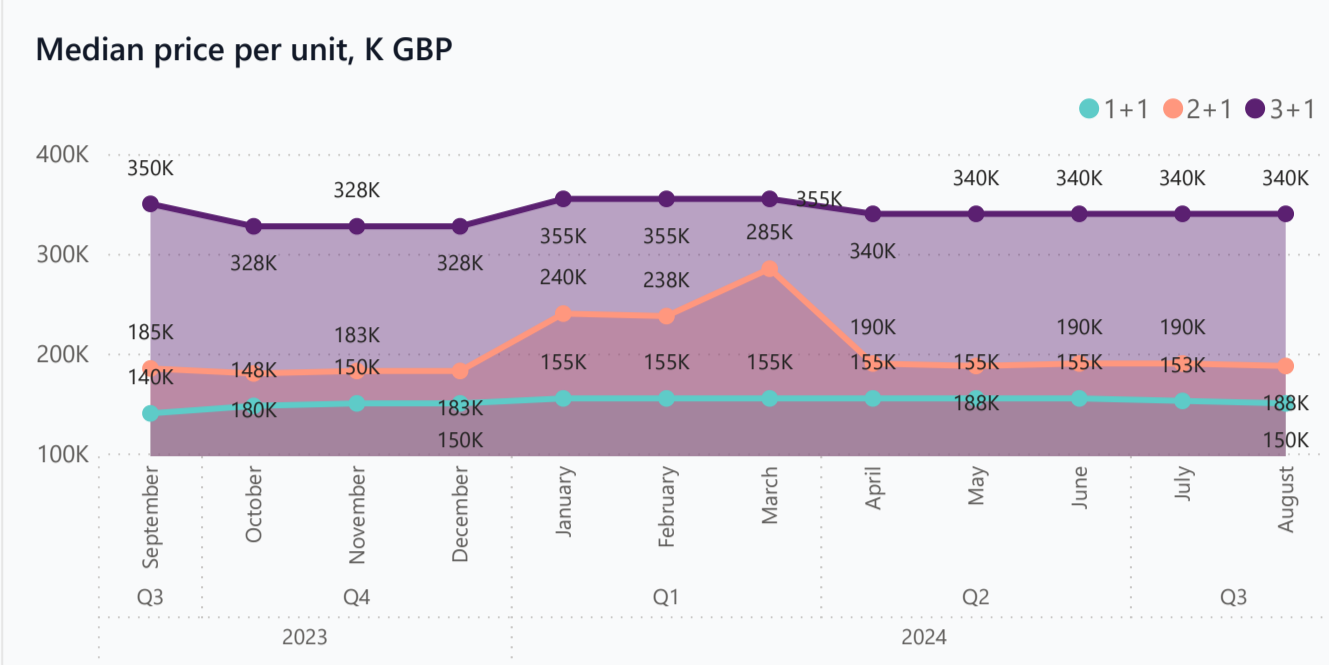
Airport 40 min. Supermarket 3 min. Pharmacy 1 min. School 5 min. Kindergarten 7 min. Hospital 4 min. center of Kyrenia

The Avangart Prime project is located in Upper Kyrenia and consists of 3 five-storey blocks, including 97 apartments, 21 offices and 8 shops. The ground floor of the building is allocated for car parking and shops. The undeniable advantage of the complex is its location in the very center of Kyrenia: within walking distance there are shopping centers, shops, banks, many cafes and restaurants. In addition, it offers you gorgeous views of the lush green mountains and the blue of the Mediterranean.

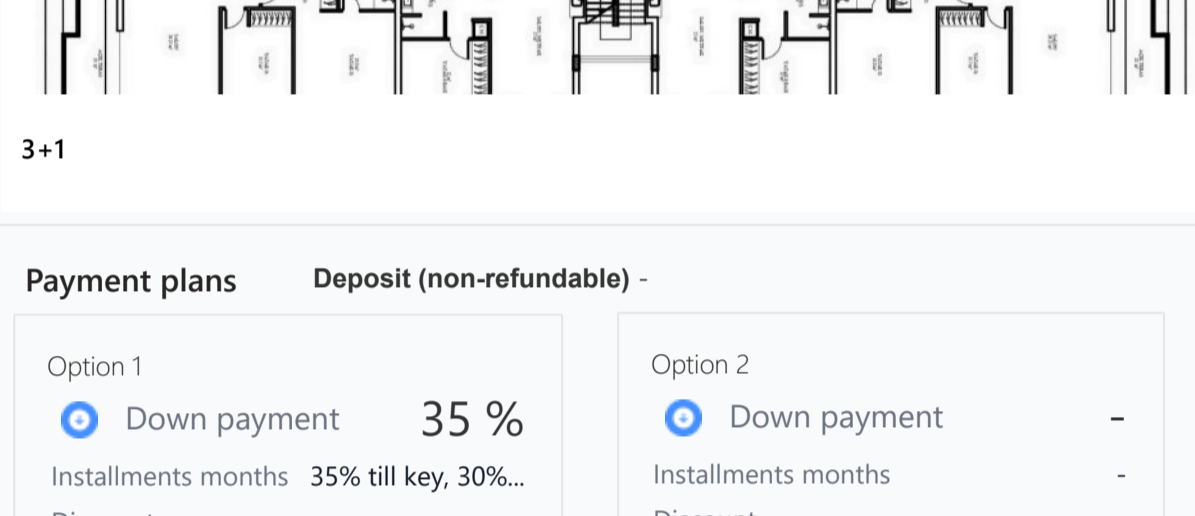
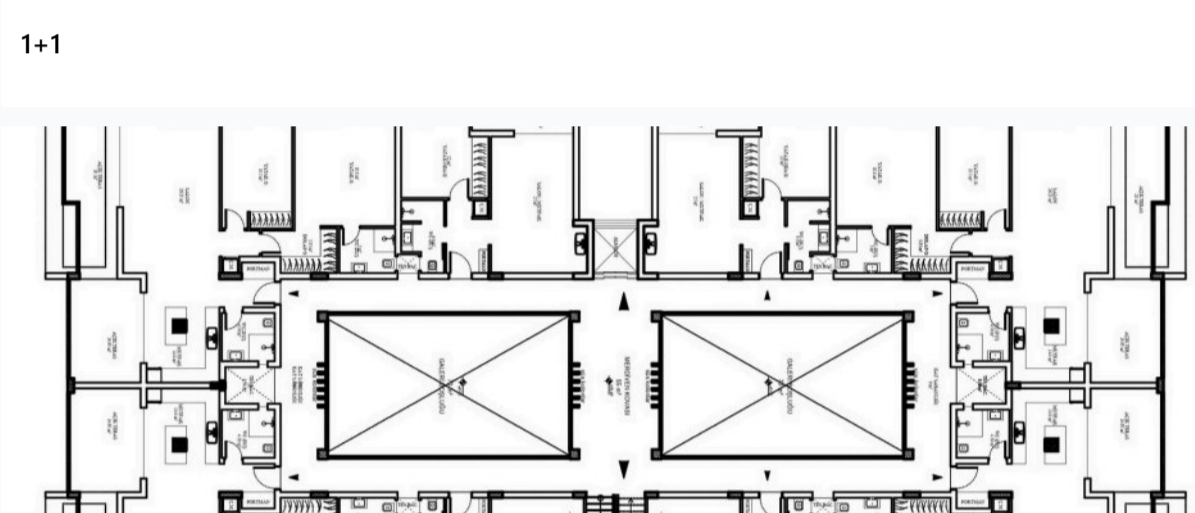
Complex infrastructure

- Automatic Entrance Gate
- Café
- Closed territory
- Open pool
- Parking
- Rental office
- Restaurant
- Rooftop poo.
- Security Camera System
- Shops
- Supermarket

Available units 24 / 100 total



Plans



Payment plans Deposit (non-refundable) -

Option	Down payment	Installments months	Discount	Offer
Option 1	35%	35% till key, 30%...	-	-
Option 2	-	-	-	-
Option 3	-	-	-	-
Option 4	-	-	-	-

- Special offer
- Fully furnished design package
- Rental guarantee

- Trafo (Blank) GBP
- Resalo -
- Maintenance fee -
- Rental services -

Details

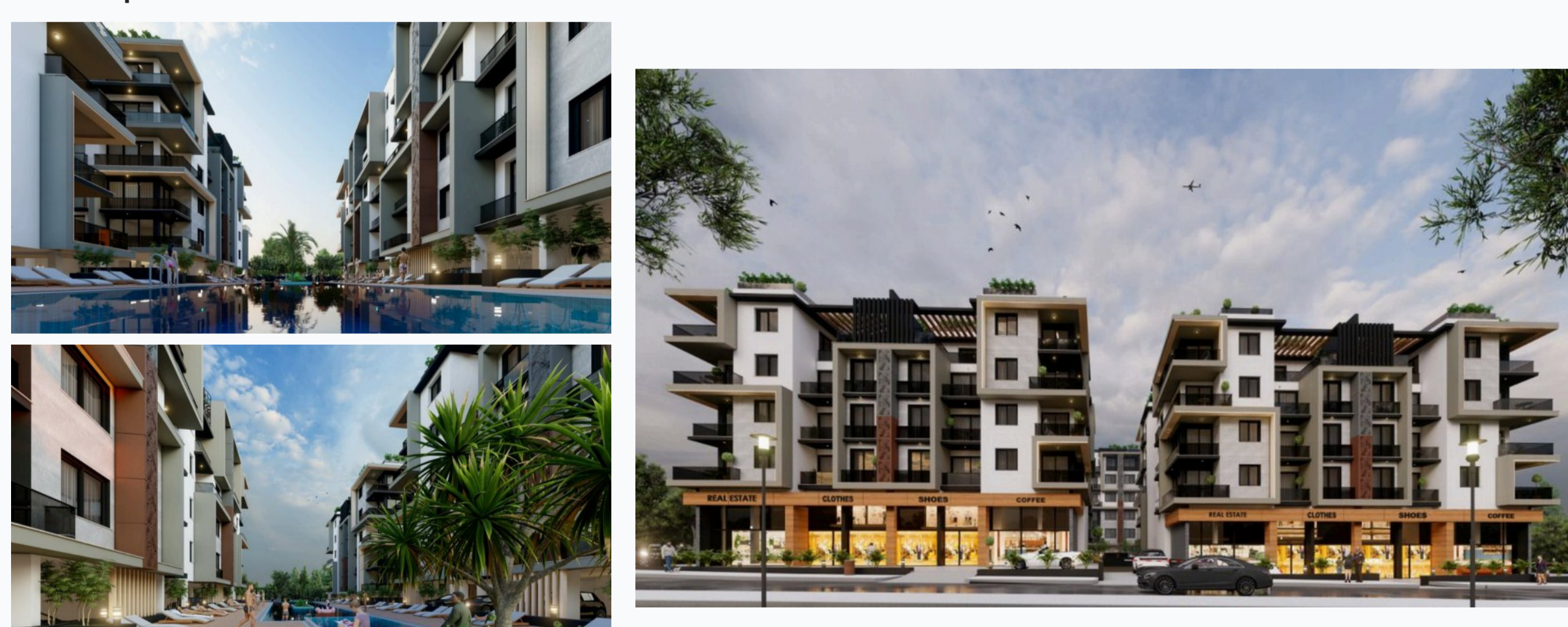
Bedrooms	Subtype	Block	Unit №	Floor	View	Bathroom	Internal area, sq. m	Balcony/ Terrace, sq. m	Rooftop terrace, sq. m	Garden, sq. m	Gross covered area, sq. m	Current price, GBP	Price per sqm, GBP
1+1	Flat	A	25	03							60	145 000	2 417
1+1	Flat	A	35	03							60	145 000	2 417
1+1	Flat	A	36	03							60	145 000	2 417
1+1	Flat	A	38	04							60	150 000	2 500
1+1	Flat	A	41	04							60	150 000	2 500
1+1	Flat	A	42	04							60	150 000	2 500
1+1	Flat	A	43	04							60	150 000	2 500
1+1	Flat	A	48	04							60	150 000	2 500
1+1	Flat	C	23	02							60	145 000	2 417
1+1	Flat	C	26	03							60	150 000	2 500
1+1	Flat	C	27	03							60	150 000	2 500
1+1	Flat	C	30	03							60	150 000	2 500
1+1	Flat	C	31	03							60	150 000	2 500
2+1	Flat	A	4	01						100	180 000	1 800	
2+1	Flat	A	28	03						100	180 000	1 800	
2+1	Penthouse	A	50	05						110	285 000	2 591	
2+1	Penthouse	A	54	05						110	330 000	3 000	
2+1	Penthouse	A	55	05						110	330 000	3 000	
2+1	Flat	B	16	01						95	180 000	1 895	
2+1	Flat	B	9	01						95	190 000	2 000	
2+1	Flat	C	25	03						95	185 000	1 947	
3+1	Penthouse	B	34	04						125	340 000	2 720	
3+1	Penthouse	B	35	04						125	340 000	2 720	
3+1	Penthouse	B	33	04						125	370 000	2 960	

Interior specification



- Ceramic flooring
- Double glazed windows
- Laminate flooring in the bedrooms

Exterior specification



- Glass fence balcony
- Spacious balcony

Location of complex

